

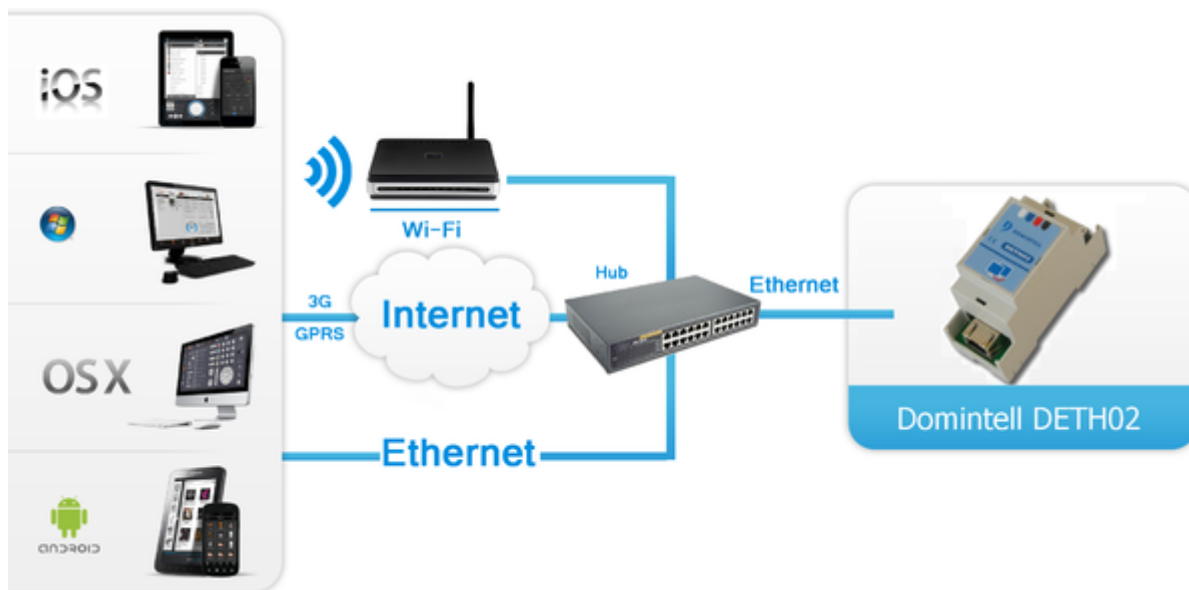
Contents

- [1 How It Works](#)
- [2 Connection to Domintell](#)
- [3 Switching Between Local and Internet Connections](#)
- [4 Principles of Command Sending](#)
- [5 Modules with Support of Domintell Light Protocol](#)
- [6 Emulation of Project Work](#)
- [7 Launching Projects on Control Panels](#)

How It Works

The UDP or TCP protocol (mostly UDP) is used for connection of iRidium App to Domintell equipment.

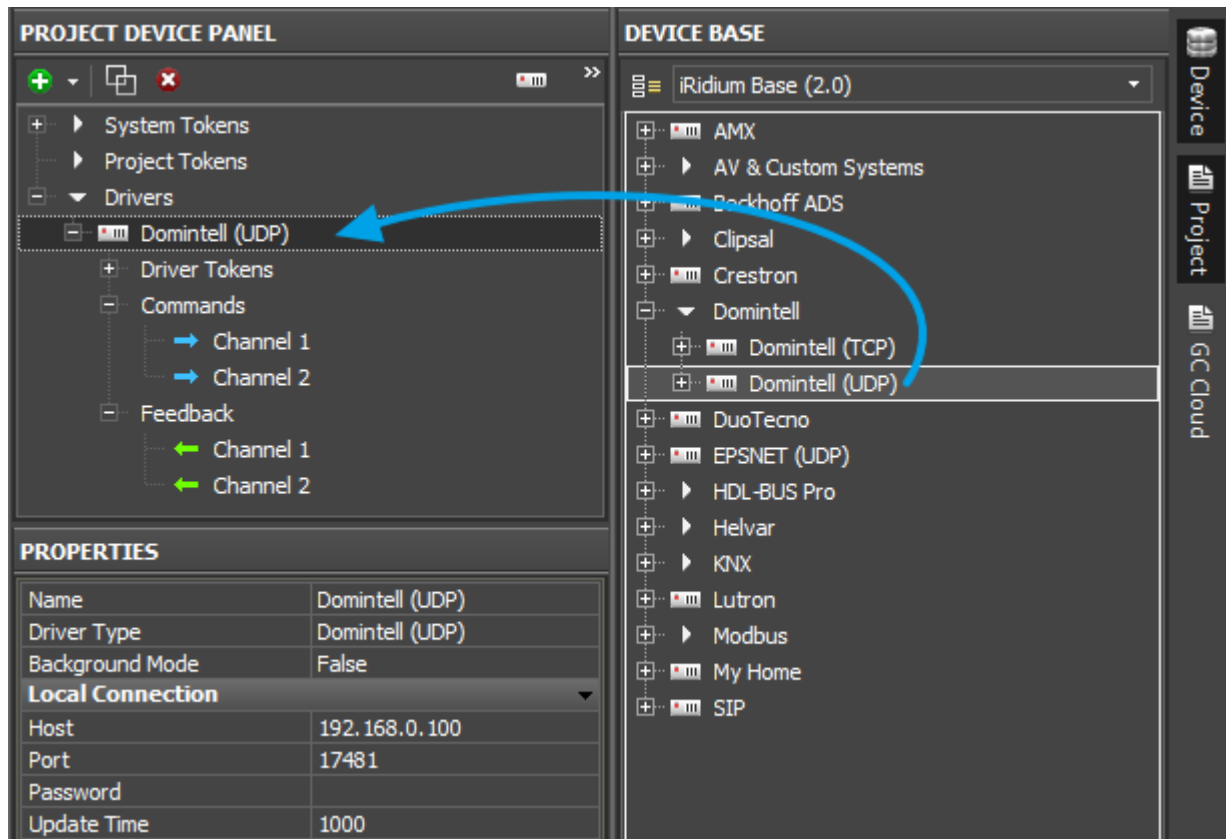
Data sending and receiving is possible only if the panel and controller are in one IP subnetwork. Topology of connecting iRidium App to Domintell equipment:



- The iRidium panel (iOS/Windows/Android/OS X) is connected DETH02 directly (via your network router) without using additional servers or accessing the Internet. The panel exchange data with DETH02: sends commands and receives the status of devices in the Domintell system.
- Only one panel can be connected to DETH02 at a time. If you want to connect several panels it can be set up with the help of [iRidium Gate](#).
- **DETH03, DETH04, DETH07 is not supported.**

Connection to Domintell

Add the Domintell driver from iRidium data base in your project and set up connection properties:



Connection properties:

- **Host** - the IP-address of the DETH02 gateway
- **Port** - the control port
- **Password** - the password for secure access
- **Update Time** (ms) - frequency of sending forced requests to Domintell devices (periodical update of the status of all devices)

For working with the controller via the Internet indicate the public IP-address of the router the controller is connected to in the connection settings. [Port Forwarding Service](#) is set up for the router to enable remote control - referring to the local (private) address of the controlled controller from the Internet.

You can learn the external (public) IP-address of your router with the help of external resources, for example [\[1\]](#).

For the Domintell driver to work you need an [iRidium License](#).

[↑ Back](#)

Switching Between Local and Internet Connections

If the control panel should hold the connection with the system when the panel is out of the limits of the Wi-Fi network of the system, you need to set up the switch between the Internet and the local

network.

The remote mode suggests connection to the system via the Internet. At that the external IP-address or the domain name of the system to which you need to connect have to be used.

⚠ In iRidium Wi-Fi/3G CANNOT be switched automatically. For switching between the Internet and the local network you need buttons with special settings. See the settings below.

⚠ To control the system remotely you have to open the system for external access - to set up [the Port Forwarding Service](#).

⚠ To secure equipment from unauthorized access we recommend using secure connection with the remote system (VPN).

Setting up of the switch Wi-Fi/3G in iRidium projects:



1. Open the script editor in iRidium GUI Editor.
2. Download and add into your project the template of the Wi-Fi/3G switch (Add Script from file): [download the template of the Wi-Fi/3G switch](#)

The Wi-Fi/3G switch is performed with the help of the script function [SetParameters](#)

Setting up of parameters of the Wi-Fi/3G switch:

```
function Internal_1() // Function name

{

    IR.GetDevice('Domintell (UDP)').SetParameters({Host: '192.168.0.101', Port: '17481',
    Password: 'admin', UpdateTime: '1500'}); // Driver Name + Parameters

}
```

```

function External_1()

{

    IR.GetDevice('Domintell (UDP)').SetParameters({Host: '220.115.10.10', Port: '17481',
    Password: 'admin', UpdateTime: '1500'});

}

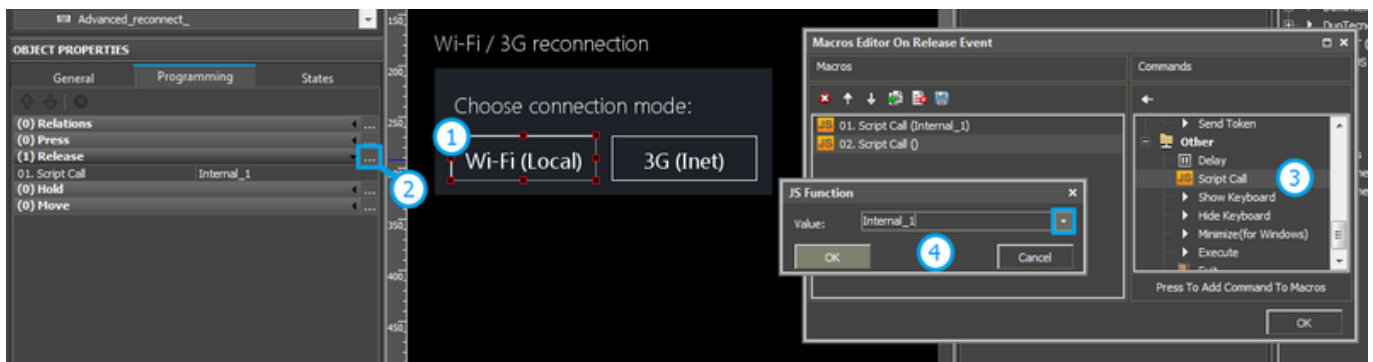
```

Indicate in the command settings:

- Function name - the name of the switch function (command). Two functions cannot have the same name in a project.
- Driver Name - the name of the driver which parameters are changed
- Parameters - the set of the switch parameters which you need to apply to the driver

Assign commands to buttons:

1. Select the button which will be responsible for the Wi-Fi/3G switch.
Open the properties of the button: Object Properties > Programming
2. Open [Macros Editor](#) of the button for the Press or Release events
3. Select the **Script Call** command and add it by double-clicking on it
4. Select the name of the function you want to activate in the drop-down list. Create the command.



Set up access to the equipment from the Internet:

In order to do that [open the equipment ports for remote access](#).

[Download the example of the Wi-Fi/3G switch \(project\) >>](#)

[↑ Back](#)

Principles of Command Sending

To send commands and receive data about the state of variables the Domintell driver has 2 tabs:

- **Commands** - commands for setting up values of controlled variables.

- **Feedbacks** – channels receiving feedback from controlled variables.

You can find more information about controlling Domintell equipment in the section

[Examples of Controlling Domintell](#)

[↑ Back](#)

Modules with Support of Domintell Light Protocol

The list of modules which you can control directly from iRidium:

Emulation of clicking (button, input module)

DPBUT1 (BU1), DPBUT2 (BU2), DPBUT4 (BU4), DPBUT6 (BU6), DISM04 (IS4), DISM08 (IS8)

Sound module

DAMPLI01 (AMP)

Relay function

DBIR01 (BIR), DMR01 (DMR), DTRP01 (TRP), DLED01 (LED)

Shutters (reverse drive)

DTRV01 (TRV), DTRP02 (TPV), DTRVBT01 (V24)

Dimmer function

DDIM01 (DIM), DOUT10V01 (D10)

Temperature: reading the status and setting up modes

DLCD03 (LC3), DPBTLCD0x (PBL), DTEM01 (TE1), DTEM02 (TE2), DTSC01_03 (TSB), DTSC04 (LT4)

Display of statuses

DMOV01 (DET), DIN10V01 (I10), DISM04 (IS4), DISM08 (IS8)

System functions

SOFT_VAR (VAR), SYS_VAR (SYS), MEM (MEM), SFE (SFE), ZON (ZON)

Fan coil units

FAN01 (FAN)

Work with modules which are not included in the Domintell Light Protocol list:

If you don't see your modules in the Light Protocol list, it means direct control of the module is not supported.

It is required to send the "%I" command to Input, which controls your module: emulate clicking the buttons set up for control of the module in the Domintell system.

For example, one of the modules which do not support direct control via the Domintell Light Protocol is DIREMIT01. To send IR commands through the module it is required to set up connection between DIREMIT01 and Input (through Domintell Programation). Thus, it is enough to simulate the Input activation.

[↑ Back](#)

Emulation of Project Work

Emulator

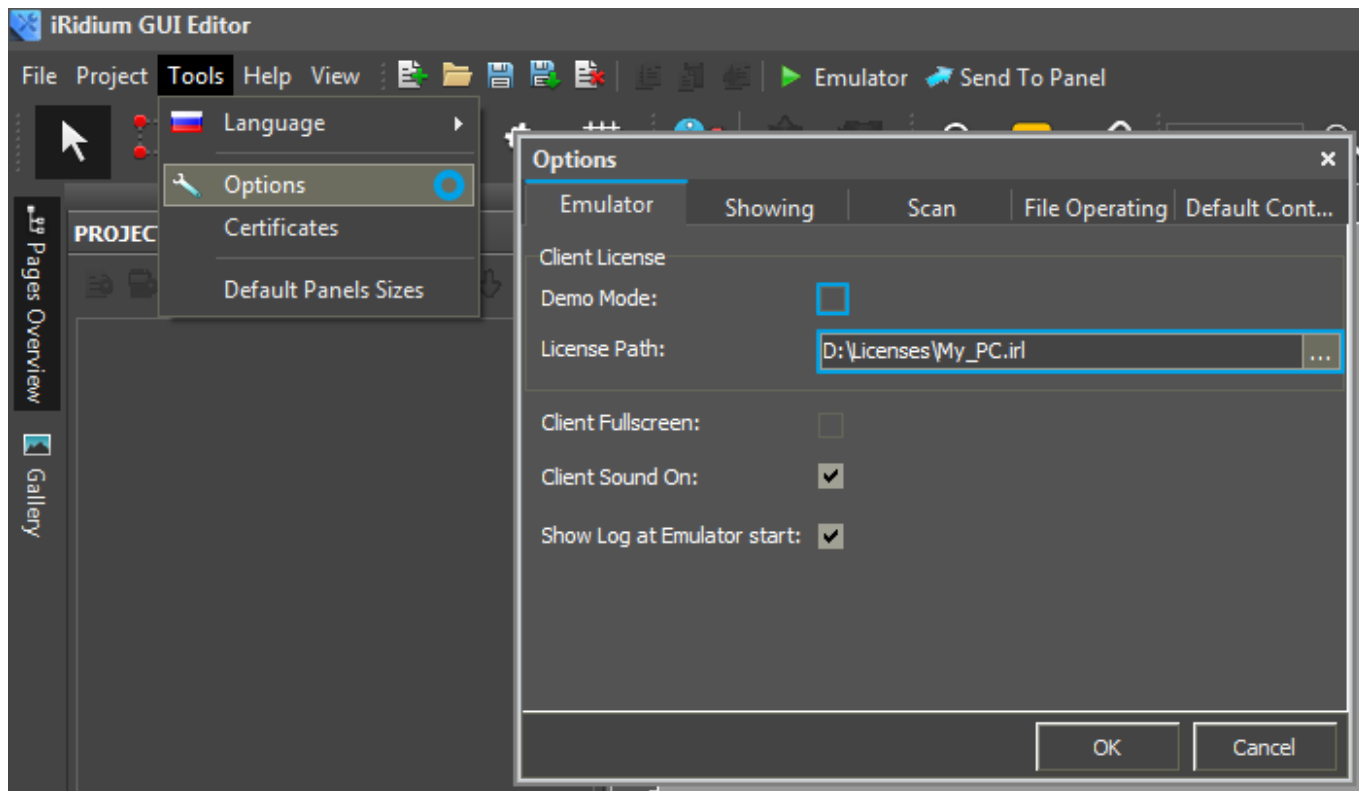
- is an iRidium application for Windows which can be launched from GUI Editor for testing your projects. Emulator can work both with a license (with connection to the equipment) and without it (when only the project graphic part is functional).

Operation modes for Emulator (see GUI Editor > Tools > Options > Emulator):

Without the license (Demo Mode: on) - **no connection with the controlled equipment.**

With the license (License Path: [...]) - when the [license file](#) is selected, all Emulator functions work and there is connection with the controlled equipment.

Indicate the path to the [license file](#) for Emulator (GUI Editor > Tools > Options > Emulator):




* When **Demo Mode** is activated Gui Editor won't show the message about starting without the connection to the controlled equipment (without a license). Check if there is a license when setting up your project.

Emulator hot keys

Click **F5** to start Emulator.

Click **F8** to open [the Emulator settings](#) (password: **2007**)

Click **F4** to open the Emulator log.



For **fully functional work** of iRidium on your PC it is required [to get](#) an iRidium license and [activate](#) it for [for your PC](#).

Activation of licenses for iPad/iPhone/Mac/Android based or other devices does NOT lead to the automatic licensing of the PC with the installed iRidium Environment. A license for your PC is required for iRidium client on your PC (including Emulator) to work in the fully functional mode. The license should be purchased separately or you can use free For testing purposes you can use free [licenses](#)).

Logging in Windows



iRidium Log is a window where information about iRidium work, error messages and iRidium Script logs (IR.Log) are output in the text format.

To open the iRidium log in Windows, click **F4**.

[↑ Back](#)

Launching Projects on Control Panels

Uploading and launching of iRidium projects on control panels are performed with the help of the [iRidium Transfer](#) application installed on your PC. You can also upload your project on the panel from GUI Editor with the help of Transfer.

- Instructions for setting up properties of the iRidium project launch on control panels: [Properties for Launching iRidium Projects](#)
- Instructions for uploading iRidium projects on control panels: [iRidium Transfer](#).
- Instructions for setting up iRidium projects on control panel: [iRidium App](#)

[↑ Back](#)