

# Contents

- [1 Work in iRidium GUI Editor](#)
- [2 Creation of iRidiumScript](#)
- [3 Editing of iRidiumScript](#)
- [4 Adding Ready Modules](#)
- [5 IntellHelp](#)

## Work in iRidium GUI Editor

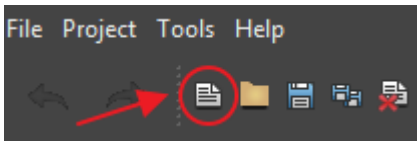
With the help of iRidium GUI Editor you can perform with scripts the following:

- Create iRidiumScript
- Edit iRidiumScript
- Add ready iRidiumScripts
- Use IntellHelp

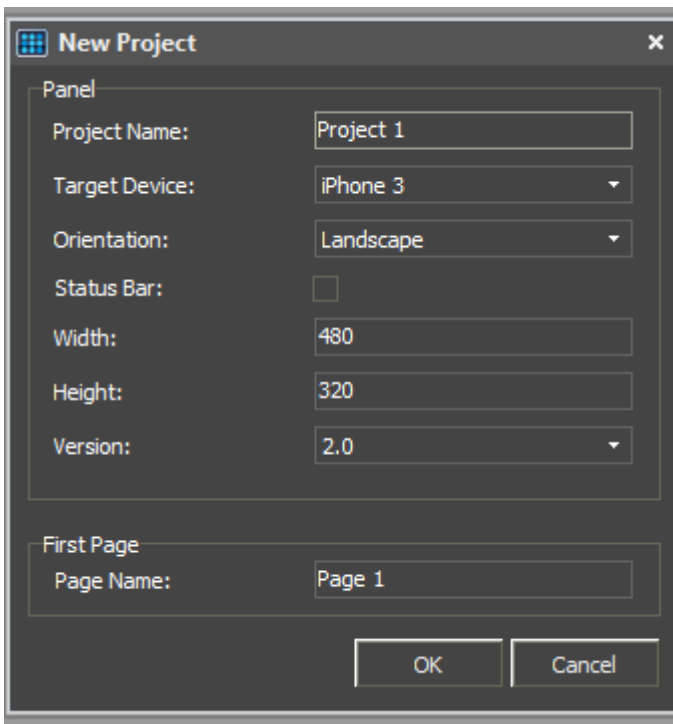
## Creation of iRidiumScript

In order to create a GUI for working with scripts it is necessary to:

- 1. Create a new project in GUI Editor.



- 2. Indicate its properties in the "New Project" window.



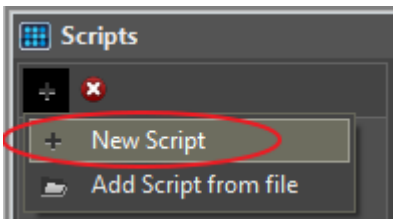
*Project Name* - the name of the new project

*Target Device* - the target device (defines the resolution)  
*Orientation* - orientation of pages (Landscape/Portrait)  
*StatusBar* - activation of the status bar (for iOS or Android devices)  
*Width* - set the width of the page (if the device is Custom)  
*Height* - set the height of the page (if the device is Custom)  
*Page Name* - the name of the start page

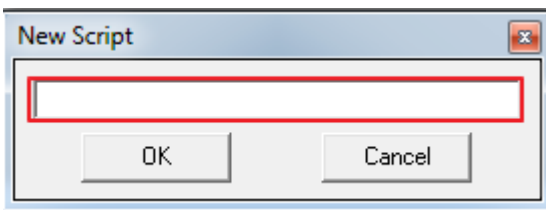
- 3. Open the window for working with iRidiumScripts by pressing on the JS icon.



- 4. In the Scripts window press on **[+]** and then select **New Script** from the dropdown list.



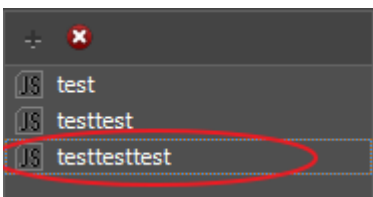
- 5. Indicate the name of the new script in the appeared input field.



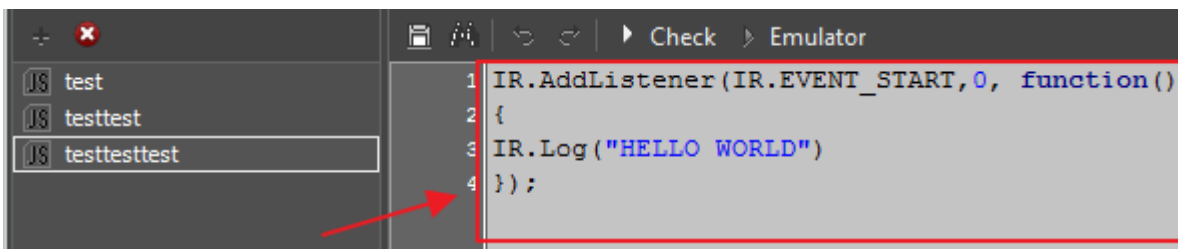
- 6. As a result we receive the new script we can edit.

## Editing of iRidiumScript

- 1. Select the module you need to edit from the list of created scripts.

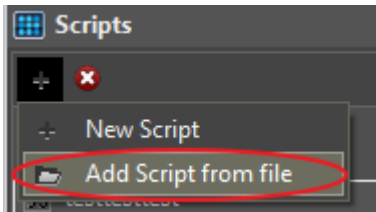


- 2. Make corrections which are required to be saved in the module.

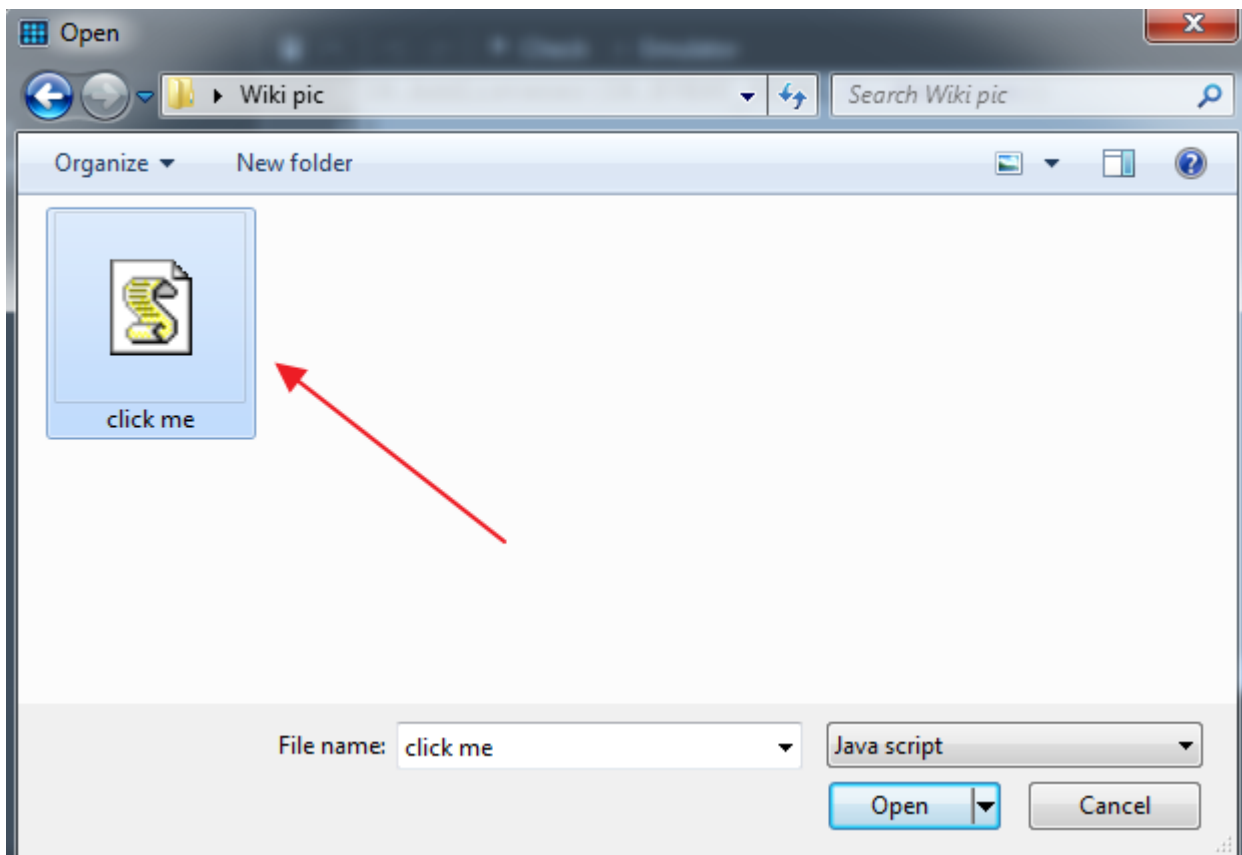


## Adding Ready Modules

- 1. Press on [+] in the menu of Scripts window and select **Add Script from file** from the dropdown list.



- 2. In the window for selecting ready files indicate the path to the file in the \*.js format.



## IntellHelp

iRidiumScript contains the system of IntellHelp which serves for simplifying the process of creation and editing scripts. when activating IntellHelp you can see the window with the list of available commands, properties or parameters.

You can see the detailed information about IntellHelp principles of operation [here](#)